

# AXIS BUKIT RAJA DISTRIBUTION CENTRE



## PROPERTY INFORMATION

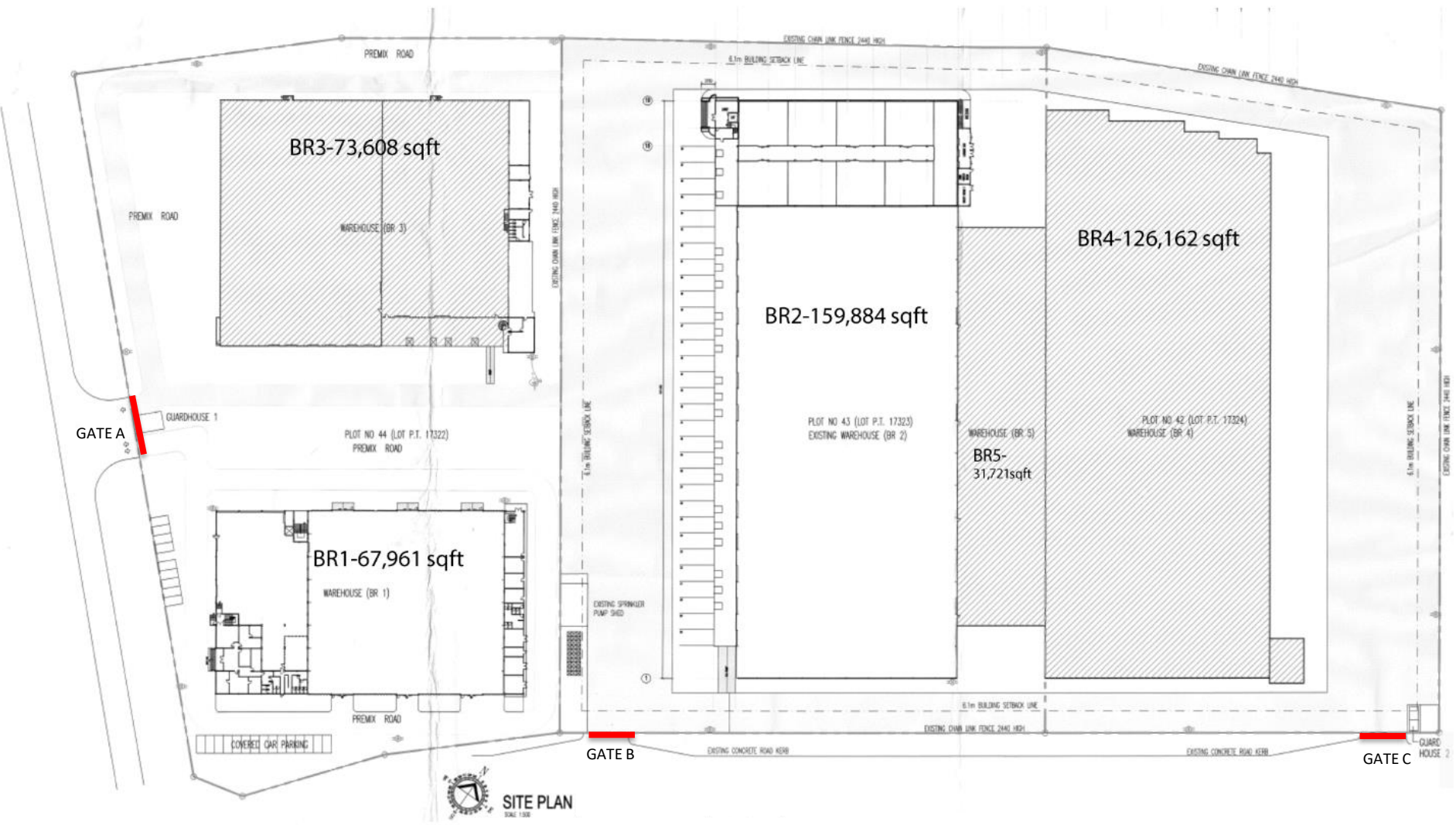
### SPACE PROPOSAL

No. 43 & 44, Lengkok Keluli 1 Kawasan Perindustrian Bukit Raja Selatan  
Seksyen 7 40000 Shah Alam Selangor

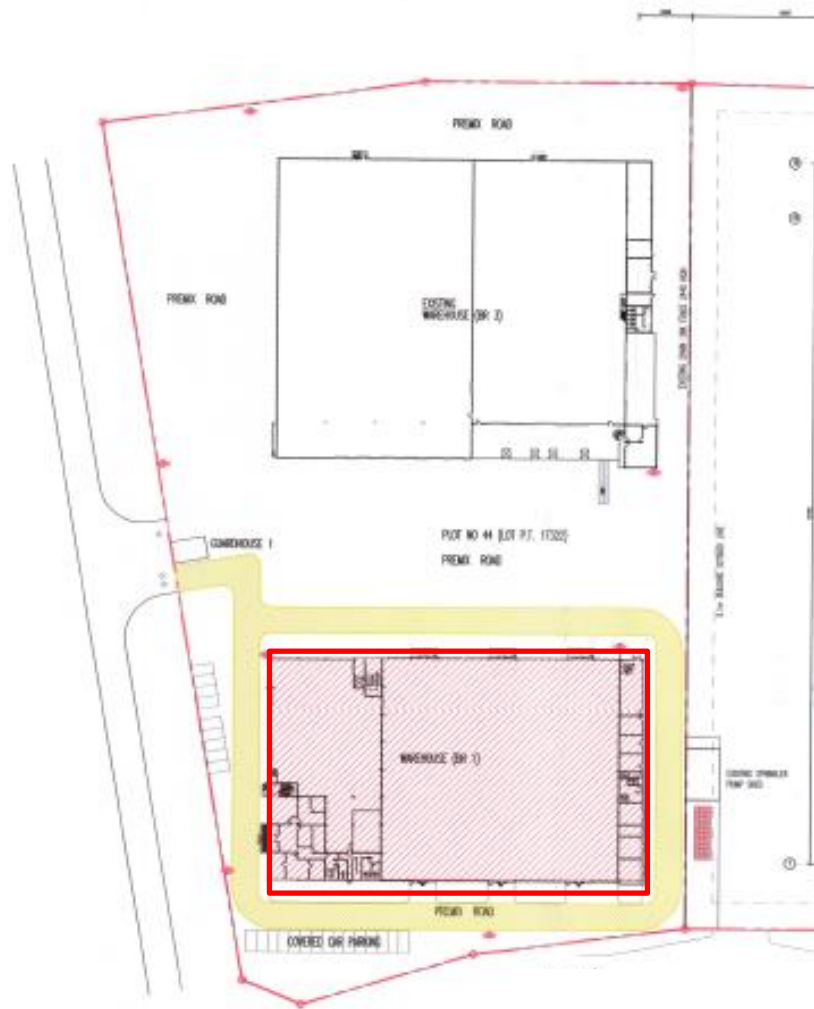


**December 2025**

# FLOOR PLANS : SITE PLAN



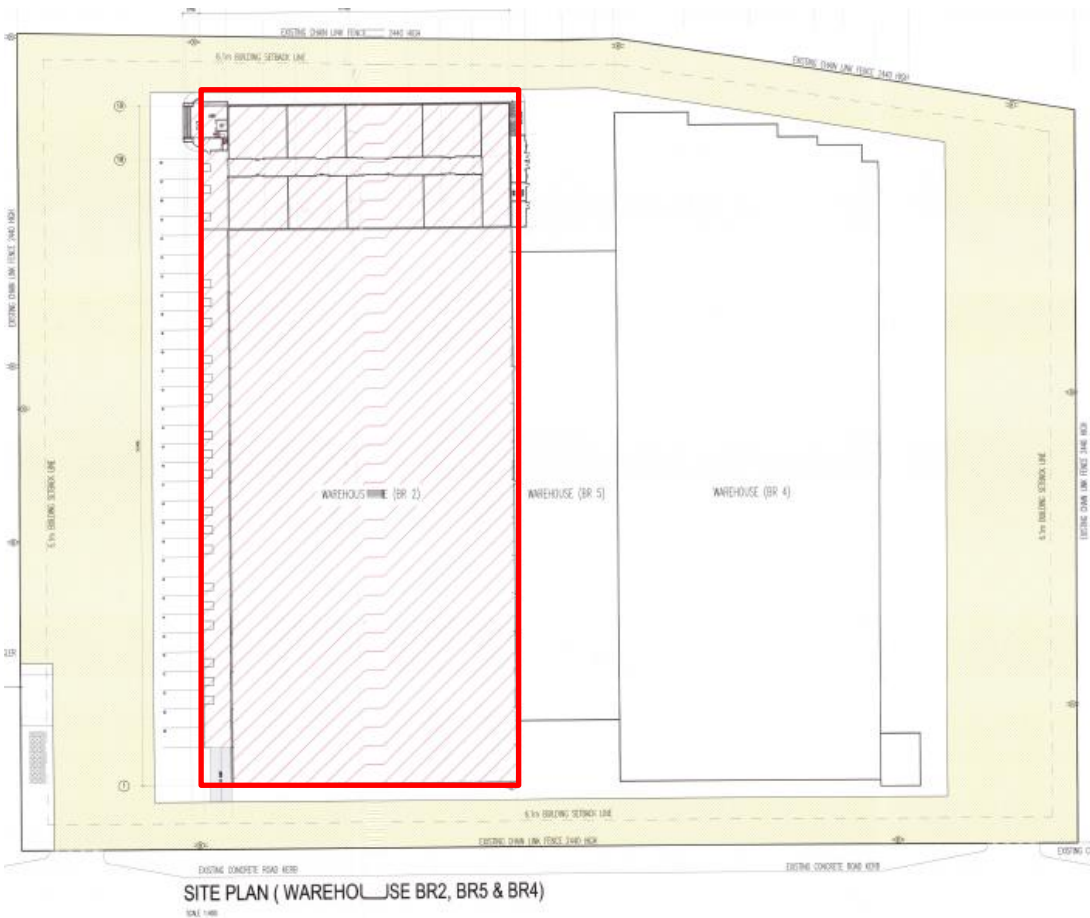
## SUMMARY OF DEMISED PREMISES (BR1)



## SPECIFICATIONS

Building Type	A single storey warehouse annexed with 3-storey office building
Built-up Area	67,961 sq ft
Floor Loading	3 tonnes per sq. metre
Floor to Ceiling Height	Office : 2.8 – 4.5 metre
Floor to Eave Height	Warehouse: 10.8 metre

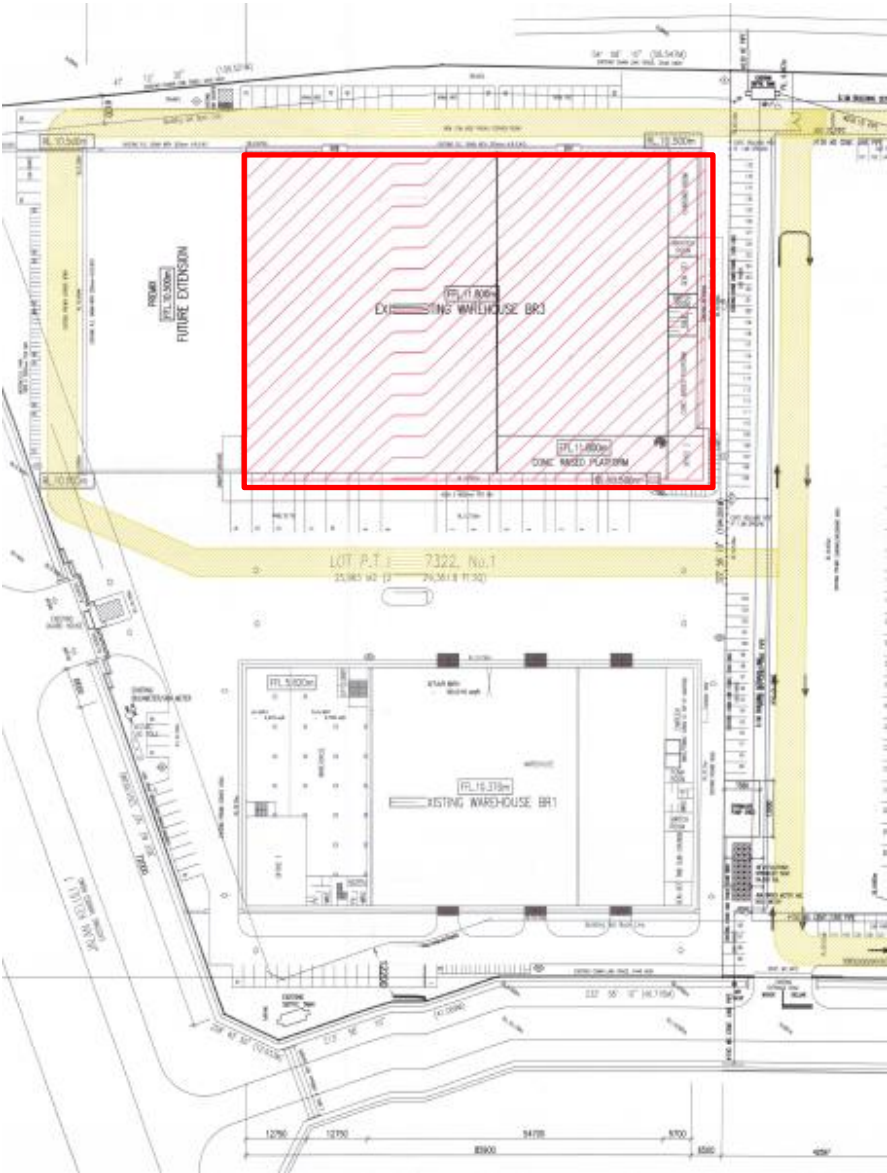
## SUMMARY OF DEMISED PREMISES (BR2)



## SPECIFICATIONS

Building Type	A single storey warehouse annexed with three storey office building with mezzanine floor
Built-up Area	159,884 sq ft
Floor Loading	3 tonnes per sq. metre
Dock leveller	18 nos.
Floor to Ceiling Height	Office : 2.4 - 4.8 metre Cold room : 7 metre
Floor to Eave Height	Warehouse: 13 metre

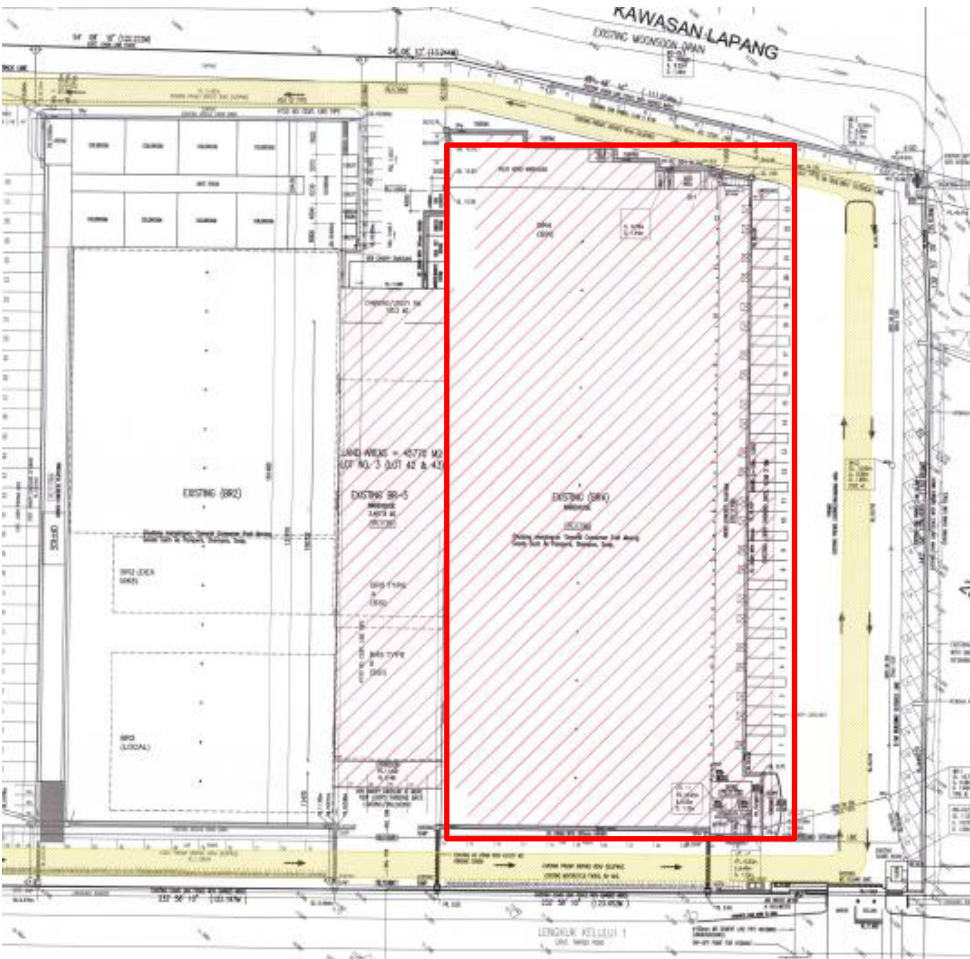
# SUMMARY OF DEMISED PREMISES (BR3)



## SPECIFICATIONS

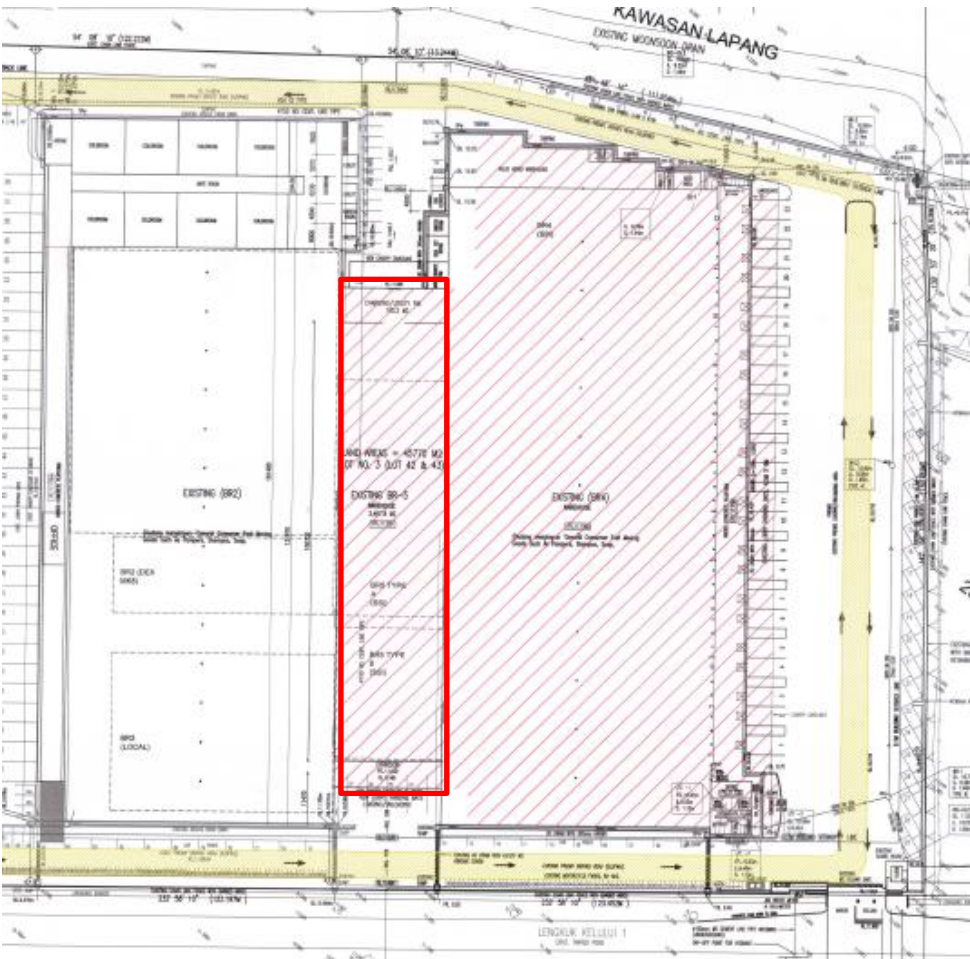
Building Type	A single storey warehouse with two storey integrated office building & a single storey utility block
Built-up Area	73,608 sq ft
Floor Loading	3 tonnes per sq. metre
Floor to Ceiling Height	Office : 2.4 metre
Floor to Eave Height	Warehouse: 13.7 metre

# SUMMARY OF DEMISED PREMISES (BR4)



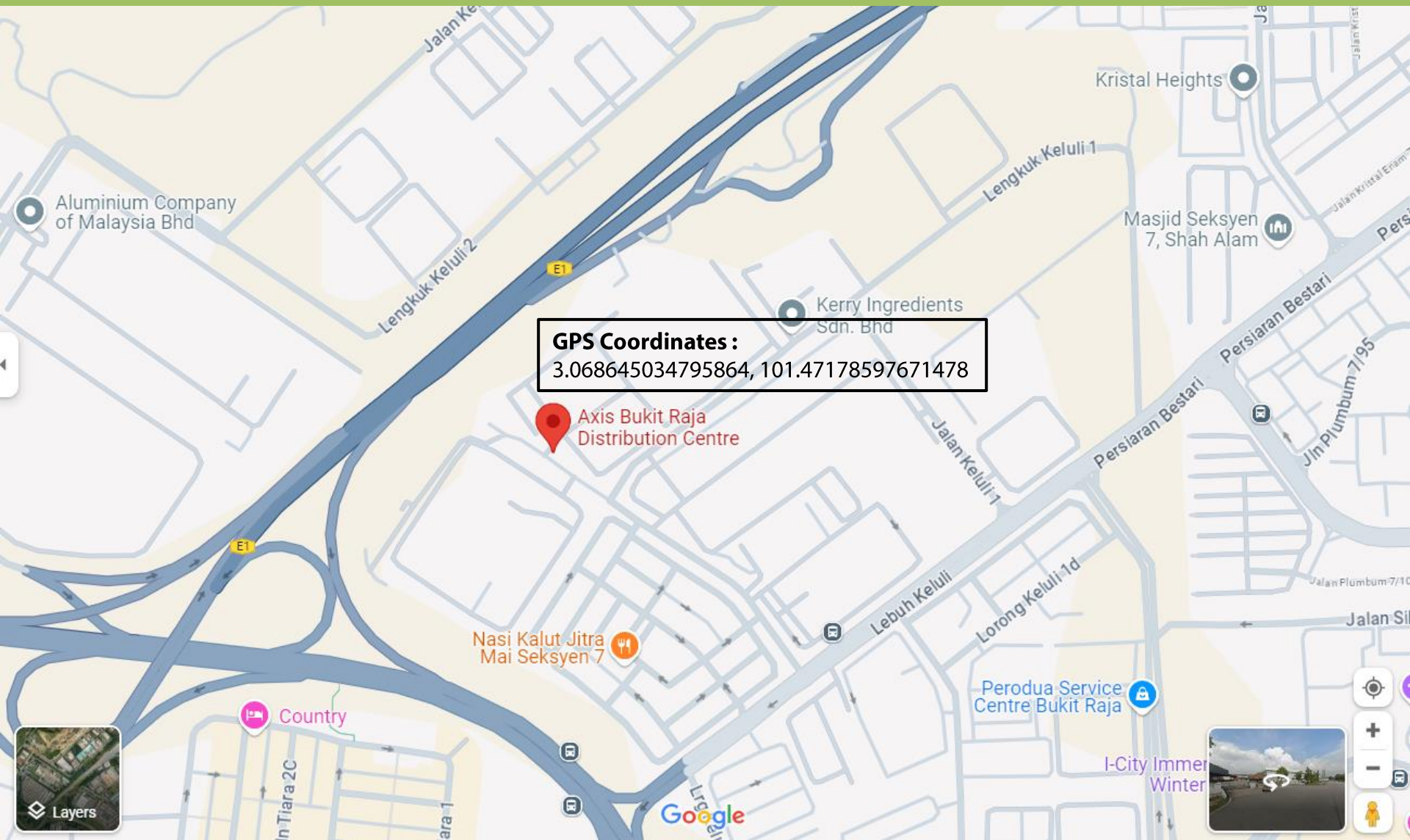
SPECIFICATIONS	
Building Type	A single storey building with integrated two storey office building, two storey storage block and single storey facility block
Built-up Area	126,162 sq ft
Floor Loading	3 tonnes per sq. metre
Floor to Ceiling Height	Office : 2.4 – 2.9 metre
Floor to Eave Height	Warehouse: 13.5 metre

# SUMMARY OF DEMISED PREMISES (BR5)



SPECIFICATIONS	
Building Type	Single storey warehouse with mezzanine floor
Built-up Area	31,721 sq ft
Floor Loading	3 tonnes per sq. metre
Floor to Eave Height	Warehouse: 5 metre

# LOCATION



The property is located along Jalan Keluli 1 Bukit Raja Selatan, Selangor.

## WHY CHOOSE AXIS?

- ✓ Malaysia's leading Real Estate Investment Trust with over 15,000,000 sq. ft. in space under management. A strong focus on owning grade A logistics assets.
- ✓ Office and warehouse space provider for FUJIFILM Business Innovation, Konica Minolta, DHL, Philips, Schenker, LF Logistics, Hitachi eBworx, Nestle, Fonterra, Emerson, Upeca Aerotech and other MNCs.
- ✓ Interest to establish long term business relationships with tenants.
- ✓ Able to provide a customized facility that offers flexibility and functionality.
- ✓ Professionally managed by Axis REIT Managers Berhad with a dedicated team of facility managers to oversee each property.
- ✓ Setting standards as a world class asset management company.
- ✓ Leveraging on technology & sustainability.
- ✓ A growing portfolio of commercial/ industrial and warehouse facilities to choose from for expansion/ relocation exercises.

# CONTACT INFORMATION

To request further information regarding this project, kindly contact:

**Jackie Law**

**Head of Real Estate**

Tel: 03-7958 4882

Mobile: 012 216 6328

Email: jackie@axis-reit.com.my

**Mr. Lawrence Loh**

Leasing Manager

O: 03 - 7958 4882

M: 012 703 2630

E: lawrenceloh@axis-reit.com.my

**Axis REIT Managers Berhad**

Penthouse Menara Axis,

2 Jalan 51A / 223, 46100 Petaling Jaya,

Selangor Darul Ehsan, Malaysia.

**Mr. Alvin Loo**

Leasing Manager

O: 03 - 7958 4882

M: 012 453 7772

E: alvinloo@axis-reit.com.my

**Ms. Loh Wai Yan**

Leasing Manager

O: 03 - 7958 4882

M: 012 537 5465

E: waiyan@axis-reit.com.my

# Privacy Notice & Anti Bribery and Anti Corruption Policy

## Privacy Note:

Personal data provided by you is required for purpose(s) relating to tenancy/lease with Axis Real Estate Investment Trust ("Purpose"). We only collect personal data that is necessary to perform our functions relating to the Purpose and/or all the dealings that we may have with you. It is obligatory that you supply us your personal data where required so that we may be able to satisfy the Purpose. If you do not provide us the personal data or consent to certain use of your personal data, we may not be able to carry out the Purpose. Any personal data provided may also be disclosed to relevant parties which we may engage/have dealings with, to perform the Purpose; and/or to the governmental or relevant authorities for regulatory oversight and compliance with the law. By providing us the personal data, you hereby consent to the processing of the personal data as described above. You may, from time to time, make any inquiries or complaints or request access or correction of the personal data or limit the processing of the personal data by calling (603-7958 4882) or emailing to our Head of Real Estate ([jackie@axis-reit.com.my](mailto:jackie@axis-reit.com.my)). By providing your personal data, you are deemed to have read and understood our Privacy Notice on the website: [www.axis-reit.com.my](http://www.axis-reit.com.my).

## **ANTI-CORRUPTION & FRAUD POLICY**

We, Axis REIT Managers Berhad, as the management company of Axis Real Estate Investment Trust ("Axis-REIT"), have adopted a zero-tolerance policy against all forms of bribery and corruption. We are committed to acting professionally, fairly and with integrity in all our business dealings and relationships, and will constantly uphold all laws relating to anti-bribery and corruption and we are guided by our Anti-Corruption & Fraud Policy ("Policy"), which is publicly available on our corporate website at [www.axis-reit.com.my](http://www.axis-reit.com.my). This Policy serves as a guideline in recognising and dealing with bribery and corrupt practices that may arise in the course of our daily business and operations, in furtherance of our Company's commitment to lawful and ethical behaviour at all times. This Policy is applicable to all third parties having business activities, dealings and transactions with us and/or Axis-REIT. This Policy should be read in conjunction with the Company's Code of Conduct, Whistle-blowing Policy and Supplier Code of Conduct which are also publicly available on our corporate website at [www.axis-reit.com.my](http://www.axis-reit.com.my).

